

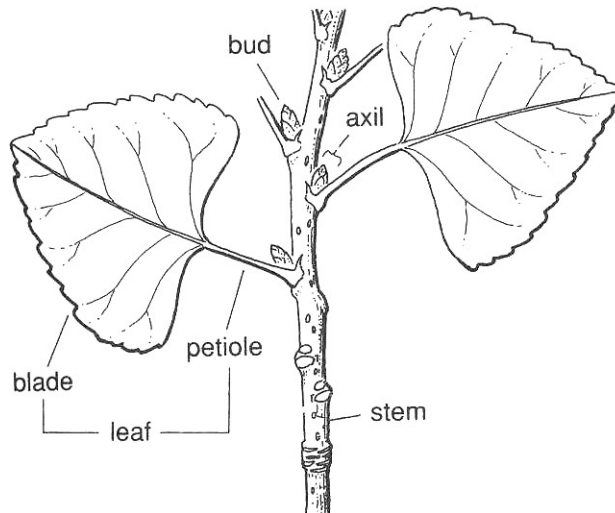
Plant Morphology—Leaves and Stems

Name: _____

[figures are from *The Jepson Manual*, 2nd ed.]

There are two main systems in a plant, the root system and the shoot system. The shoot system is made up of leaves, stems and flowers. Today we will focus on the details of the leaves and stems.

Figure 1. The shoot system in flowering plants

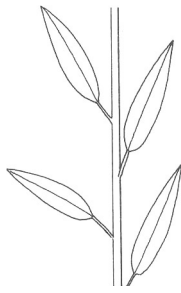


- 1) **Leaf:** A leaf is made up of two parts: a *blade* and a *petiole*. You can identify a leaf because it will have a bud between the lowest part of its petiole and the stem (careful, this can be tricky because sometimes the bud is very small!).
- 2) **Stem:** The stem is the skeleton of the plant. “Stem” can refer to any part of the branching system of the plant.

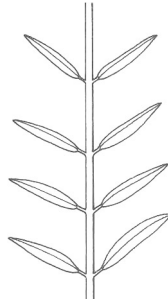
Use this whole page to draw your plant:

Words to describe plants

1) **Leaf arrangement:** Leaves can be arranged around the stem in three ways:



alternate leaves



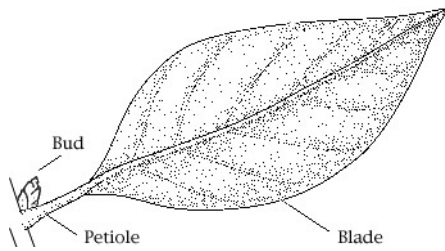
opposite leaves



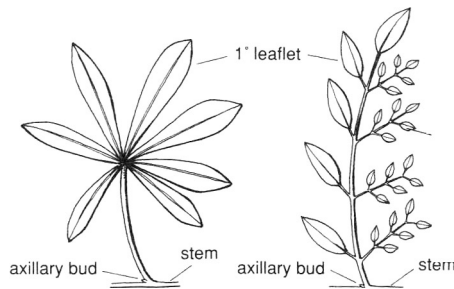
whorled leaves

My plant has _____ leaves.

2) **Leaf Type:** A leaf can either be *simple* or *compound*. A simple leaf has one blade. A compound leaf has many blades.



simple leaf



compound leaf

My plant has _____ leaves.

3) **Leaf Shape:** Leaves can be many shapes!



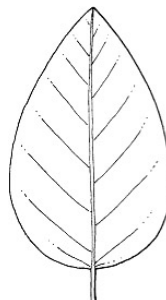
lanceolate



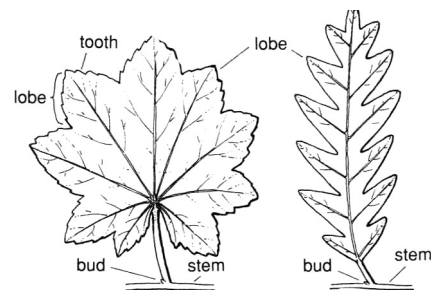
deltate



linear



ovate



lobed

My plant has _____-shaped leaves.